



You can Visualize your system with the  
"Manufacturing Command Center"

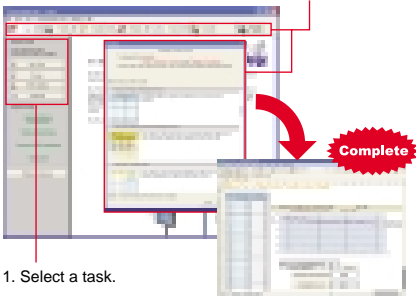
Data management software

# Pro-Server EX

Use Pro-Server EX to Manage Production with GP.  
Introducing easier, low cost, networking of production sites and offices.

## Wizard Function

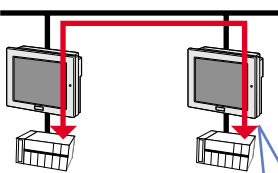
2. Simply follow the instructions as they appear on the screen.



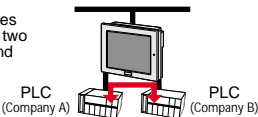
1. Select a task.

Use the wizard to prepare reports. To create a network project, simply follow the messages and specify the items needed.

## Device to Device Communication

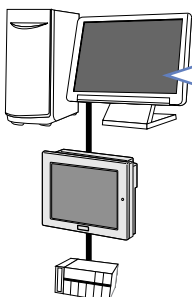


The GP3000 series can connect with two or more PLCs, and enables device communication between PLCs.



Even with no PC connected, you can share data with other equipment connected to the GP. All types of equipment and data can be accommodated.

## Monitor Device Status



Status monitor

Device monitor

Symbol monitor

Log viewer

Monitor status and information of equipment connected to the GP on the (connected) PC screen. No programming is required.

## No special programming is required.

To acquire data, simply paste it into Excel

Connects easily to VB/VC

Collects/ Writes data automatically in Excel/Access

RDB SQL Server Oracle, others...

E-mail

DDE

DLL API

ODBC

SMTP

Actions

Enhanced server functions

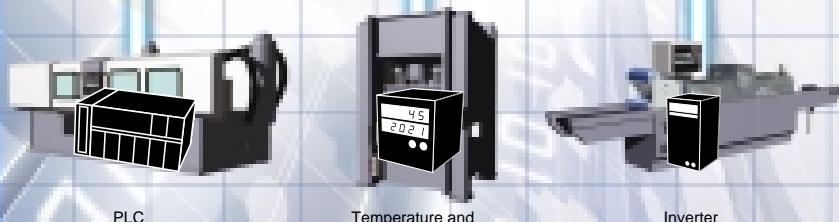
Pro-Server EX

Data Logging  
Alarm History

Recipes

## GP3000 SERIES

A New Concept in Graphic Operator Interfaces



PLC

Temperature and Process Controllers

Inverter



ISO9001  
JQA-1367

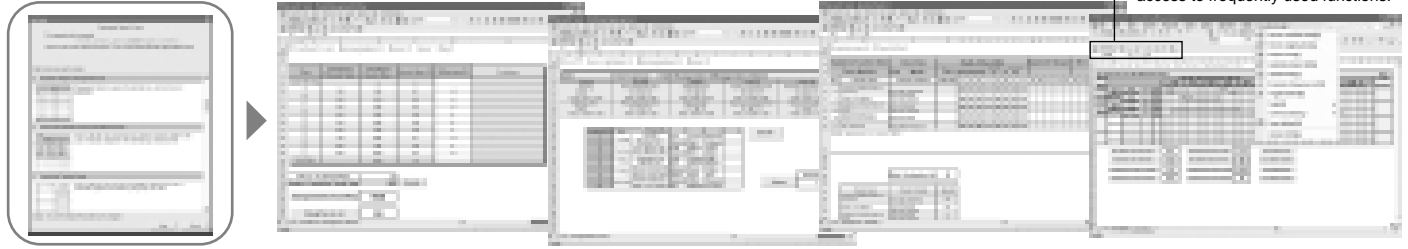
# Use information in innovative ways with these versatile new functions.

## Report Preparation



### Report Preparation

Compile data from devices into structured reports using templates and Excel's edit functions.



### Excel action tool bar

The special action bar displayed on the Excel screen provides easy access to frequently used functions.

## Data Logging / Recipes



### Data Logging

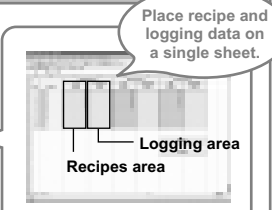
Collect device data in real time and save it in your desired format.



### Recipes

Transfer data directly from your office to equipment on site. Numerous data formats can be accommodated.

<Save data in multiple formats>  
**CSV, Excel, Access, Oracle, SQL Server**

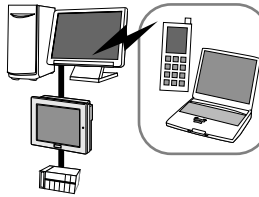


Place recipe and logging data on a single sheet.  
 The display of production orders and results on a single screen allows you to monitor progress at a glance.

## E-mail Alerts



Arrange to receive an e-mail alert whenever a certain event occurs.



## Support models

### GP3000 Series

- AGP3750-T1-AF    AGP3550-T1-AF    AGP3450-T1-D24
- AGP3650-T1-AF    AGP3500-T1-AF    AGP3400-T1-D24
- AGP3600-T1-AF    AGP3500-T1-D24    AGP3400-S1-D24
- AGP3600-T1-D24    AGP3500-S1-AF    AGP3300-T1-D24
- AGP3500-S1-D24    AGP3500-S1-D24    AGP3300-S1-D24
- AGP3500-L1-D24    AGP3300-L1-D24

### GP2000 Series

- GLC2600-TC11
- GLC2600-TC41-24V
- GLC2500-TC11
- GLC2500-TC41-24V
- GLC2500-SC41-24V
- GLC2400-TC41-24V
- GLC2300-TC41-24V
- GLC2300-LG41-24V
- GLC2300-TC41-24V
- GLC2300-SC41-24V
- GLC2300-LG41-24V

### GLC2000 Series

- GLC2600-TC41-200V
- GLC2600-TC41-24V
- GLC2500-TC41-200V
- GLC2500-TC41-24V
- GLC2400-TC41-24V
- GLC2300-TC41-24V
- GLC2300-LG41-24V

### Factory Gateway

- FGW-SE41-24V

### ST Series

- ST403-AG41-24V

\* Can not communicate with following protocols in GP/GLC2000 series, Factory Gateway, ST series.

- Rockwell Automation, Inc. DH-485 Data Highway Plus Control Logix Ethernet SLC500 SLC505 Ethernet Remote I/O
- Siemens AG SIMATIC S7 Ethernet SIMATIC S7 300/400 MPI SIMATIC S7 200 MPI
- Schneider Electric Industries Modbus Plus MODBUS SIO Uni-Telway
- OMRON Corporation SYSMAC-CS1 Ethernet
- Fuji Electric Corporation Micrex-SX
- YOKOGAWA Electric Corporation fcn/fcj Modbus
- Hitachi Industrial Equipment System Co., Ltd. HIDICH H Ethernet
- HIOKI E.E CORPORATION Smart Site Modbus Ethernet
- OTHERS Net10 CCLINK ID

\* Pro-Server and Pro-Server EX are impossible of coexistence.  
 \* Data exchange between Pro-Server and Pro-Server EX is not possible.

## Pro-Server EX Operating Environment

PC	PC/AT compatible with Windows® operating system (Not compatible with NEC PC9800 Series.)
OS	Windows® 2000 (Service Pack 3 or later), Windows® XP Home Edition / Professional Note: Administrator privileges are required to install this software.
CPU	Intel® Pentium® III 500MHz or more (Pentium® III 800MHz or more is recommended)
Resolution	800 x 600 (SVGA) or more, 256 colors minimum, 96 dpi font only
Memory	128 MB or more (256 MB or more is recommended)
Hard Disk Space (required for installation)	1 GB or more (2 GB or more is recommended)
Software Menu Languages	English, Japanese
Language FEP	FEP supported by the above OS
Other software	Microsoft® Excel 2000 or later (when ACTION function is set) Microsoft® Access 2000 or later (when ACTION function is set) Microsoft® Internet Explorer Ver. 5.0 or later (when ACTION function is set) .NET Framework Ver.1.1 (Service Pack1)
Printer	Any model supported by the above OS
Network adapter	10BASE-T, 100BASE-TX
Network protocol	TCP/IP (Specified in Windows Control Panel)

**Caution:** Before operating any of these products, be sure to read all related manuals thoroughly.

- Windows®, Windows logo, and/or other Microsoft products referenced herein are either registered trademarks or trademarks of Microsoft Corporation in the U.S. and/or other countries.
- Intel®, Pentium® are trademarks or registered trademarks of Intel Corporation or its subsidiaries in the United States and other countries.
- Microsoft® Excel is a registered trademark of Microsoft Corporation.
- Product names used in this manual are the trademarks of their respective manufacturers.
- All information contained in this catalog is subject to change without notice.



Pro-face is a registered trademark of Digital Electronics Corporation in Japan, U.S.A., Canada, Europe and other areas and countries.

**www.pro-face.com**

Worldwide Contacts:  
<http://www.pro-face.com/worldwide/>

**Global Head Office**  
 Digital Electronics Corporation  
 8-2-52 Nanko-higashi  
 Suminoe-ku,  
 Osaka 559-0031  
 JAPAN  
 Tel: +81-(0)6-6613-3116  
 Fax: +81-(0)6-6613-5888  
<http://www.pro-face.com>  
[support@digital.co.jp](mailto:support@digital.co.jp)

**China**  
 Pro-face China International Trading  
 (Shanghai) Co., Ltd.  
 7F-F, 138 Pudong Avenue  
 Shanghai 200120  
 P. R. CHINA  
 Tel: +86-(0)21-6888-9825  
 Fax: +86-(0)21-6888-9826  
<http://www.proface.com.cn>  
[proface@proface.com.cn](mailto:proface@proface.com.cn)

**China**  
 Pro-face China International Trading  
 (Shanghai) Co., Ltd.  
 Guangzhou Office  
 19F-H, 189 West Ti Yu Road,  
 Guangzhou 510620  
 P. R. CHINA  
 Tel: +86-(0)20-3879-6641  
 Fax: +86-(0)20-3879-6646  
<http://www.proface.com.cn>  
[guangzhou@proface.com.cn](mailto:guangzhou@proface.com.cn)

**South Korea**  
 Pro-face Korea Co., Ltd.  
 4<sup>th</sup> floor, Cheil Bldg. 94-46  
 Youngdeungpo-dong 7ga,  
 Youngdeungpo-gu Seoul 150-37  
 SOUTH KOREA  
 Tel: +82-(0)2-2630-9850  
 Fax: +82-(0)2-2630-9860  
 Support Center (A/S Center)  
 Tel: +82-(0)31-940-3713  
 Fax: +82-(0)31-940-3780  
<http://www.proface.co.kr>  
[proface@proface.co.kr](mailto:proface@proface.co.kr)

**Taiwan**  
 Pro-face Taiwan Co., Ltd.  
 3F, No.39, Ji-Hu Road, Nei-Hu Dist.  
 Taipei 114  
 TAIWAN  
 Tel: +886-(0)2-2657-1121  
 Fax: +886-(0)2-2657-1021  
<http://www.proface.com.tw>  
[proface@proface.com.tw](mailto:proface@proface.com.tw)

**South-East Asia Pacific**  
 Pro-face South-East Asia Pacific Co., Ltd.  
 75/69, 19 A Floor, Richmond Building,  
 Sukhumvit 26, Klong Tan, Klong Toei,  
 Bangkok 10110  
 THAILAND  
 Tel: +66-(0)2-260-8282  
 Fax: +66-(0)2-260-8283  
<http://www.proface.co.th>  
[support@proface.co.th](mailto:support@proface.co.th)

**Australia and New Zealand**  
 Pro-face Australia Pty Ltd.  
 87 Ricketts Road, Mt.Waverley,  
 VIC 3149,  
 AUSTRALIA  
 Tel: +61-(0)3-9550-7395  
 Fax: +61-(0)3-9550-7390  
<http://www.pro-face.com.au>  
<http://www.pro-face.co.nz>  
[pfau@pro-face.com](mailto:pfau@pro-face.com)

**North/South American Head Office**  
 Pro-face America, Inc. / Xycom  
 750 North Maple Road  
 Saline, MI 48176-1292  
 U.S.A.  
 Tel: +1-734-429-4971  
 Fax: +1-734-429-1010  
<http://www.profaceamerica.com>  
[support@profaceamerica.com](mailto:support@profaceamerica.com)

**European Head Office**  
 Pro-face Europe B.V.  
 Wegalaan 32,  
 2132 JC Hoofddorp  
 THE NETHERLANDS  
 Tel: +31 (0)23 55 44 099  
 Fax: +31 (0)23 55 44 090  
<http://www.proface.com>  
[support@proface.com](mailto:support@proface.com)

**Poland**  
 Pro-face Europe B.V. (Warsaw Office)  
 St.Jana Pawla II nr 12  
 3<sup>rd</sup> floor A1  
 00-124 Warsaw  
 POLAND  
 Tel/Fax: +48-22-850-9154  
<http://www.proface.pl>

**France**  
 Pro-face France S.A.S.  
 1, rue Henri Becquerel  
 Immeuble Le Vinci 4  
 77290 Mitry-Mory  
 FRANCE  
 Tel: +33 (0)1 60 21 22 91  
 Fax: +33 (0)1 60 21 22 92  
<http://www.proface.fr>  
[info@proface.fr](mailto:info@proface.fr)

**United Kingdom**  
 Pro-face UK Ltd  
 Pro-face House 8 Orchard Court  
 Binley Business Park  
 Coventry CV3 2TQ  
 ENGLAND  
 Tel: +44 (0)2476 440088  
 Fax: +44 (0)2476 440099  
<http://www.profaceuk.com>  
[support@profaceuk.com](mailto:support@profaceuk.com)

**Germany**  
 Pro-face Deutschland GmbH  
 Albertus-Magnus-Straße 11  
 42719 Solingen  
 GERMANY  
 Tel: +49 (0)212 258 260  
 Fax: +49 (0)212 258 2640  
<http://www.pro-face.de>  
[support@pro-face.de](mailto:support@pro-face.de)

**Switzerland**  
 Pro-face Deutschland GmbH  
 Niederlassung Schweiz  
 Pumpwerkstr. 23  
 CH-8105 Regensdorf  
 SWITZERLAND  
 Tel: +41 (0)43 343 7272  
 Fax: +41 (0)43 343 7279  
<http://www.pro-face.ch>  
[info@pro-face.ch](mailto:info@pro-face.ch)

**Italy**  
 Pro-face Italia S.p.a.  
 Via G. di Vittorio 26  
 20030 Bovisio Masciago (Milano)  
 ITALY  
 Tel: +39 0362 59 96 1  
 Fax: +39 0362 59 96 69  
<http://www.proface.it>  
[info@proface.it](mailto:info@proface.it)

**Scandinavia**  
 Pro-face Scandinavia ApS  
 Copenhagen  
 Produktionsvej 26  
 DK-2600 Glostrup  
 DENMARK  
 Tel: +46 70 22 01 22  
 Fax: +45 70 22 01 33  
<http://www.pro-face.eu.net>  
[info@pro-face.eu.net](mailto:info@pro-face.eu.net)

**Sweden**  
 Pro-face Sweden AB  
 Malmö  
 Produktvägen 8B  
 SE-246 21  
 SWEDEN  
 Tel: +46 46 540 90 70  
 Fax: +46 46 71 27 90  
<http://www.pro-face.eu.net>  
[info@pro-face.eu.net](mailto:info@pro-face.eu.net)

**Spain and Portugal**  
 Pro-face España  
 Apartado de Correos No 62  
 E-08440 Cardedeu Barcelona  
 SPAIN  
 Tel: +34 (0)93 846 07 45  
 Fax: +34 (0)93 845 48 68  
<http://www.pro-face.es>  
[central@pro-face.es](mailto:central@pro-face.es)

